



## Guide

# Upload Graphical Export to WDU

## Uploading Graphics

Exported graphical package is uploaded to the WDU through the WDU Supervisor.

1. Connect a computer to the Garmin Marine Network via Wi-Fi (alternatively Ethernet cable)
  - a. Wi-Fi: Activate Garmin MFD Wi-Fi (Settings->Communication->Wi-Fi Network). Connect your computer to the Garmin MFD Wi-Fi.
  - b. Ethernet cable: Directly connecting to the WDU will not work, there needs to be a Garmin MFD in the network.
2. Open the WDU Finder. (Figure 11.1)
3. Locate the Supervisor Application and select Open. (Figure 11.2)
4. In Graphics select Browse (Figure 11.3). Locate the downloaded export file in the computer directory.
5. Press Upload (Figure 11.4). An Alert text will display the status of the process.

For further details on this process please view the [WDU manual](#).

If the WDU Finder cannot be used. The supervisor page can be reached by entering the supervisor URL in the address bar of a web browser. The URL can be found in the Empirbus Settings application on the Garmin MFD. (Figure 11.5)

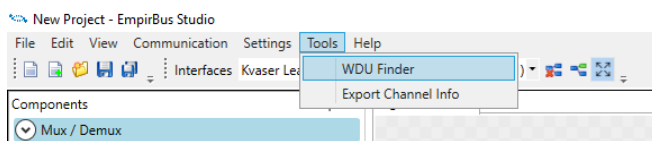


Figure 11.1 WDU Finder

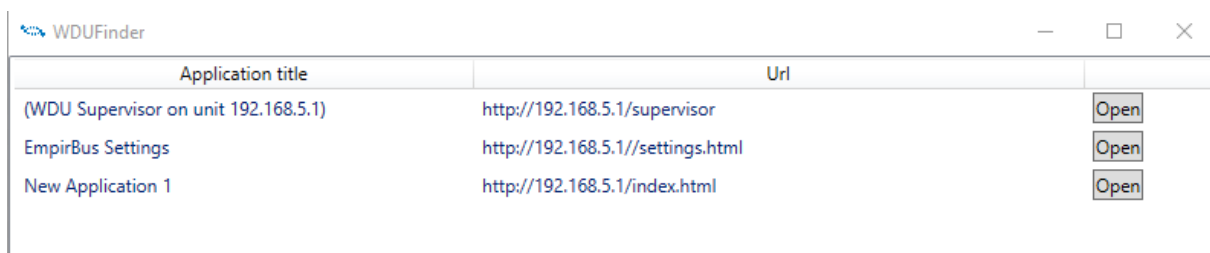


Figure 11.2 WDU Supervisor



Figure 11.3 Supervisor uploading page. Browse

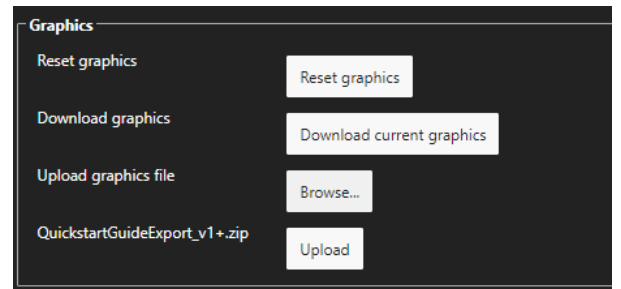


Figure 11.4 Supervisor uploading page. Upload

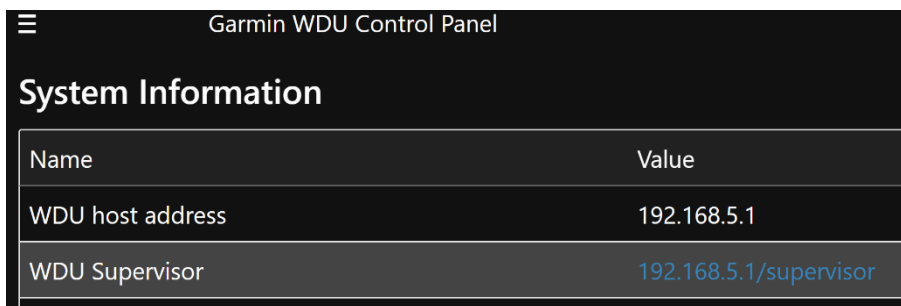


Figure 11.5 WDU supervisor URL.

## Support

A lot of useful information can be found on our website. In case answers can't be found there, feel free to contact us anytime by phone or email.

### Website

<https://www.EmpirBus.com/#faq>

<https://www.EmpirBus.com/#support>

### Email:

[Support@EmpirBus.com](mailto:Support@EmpirBus.com)

### Phone:

+46 522 44 22 22

8 am to 5 pm (CET/CEST), Monday to Friday