



Installation Guide
Graphical file Raymarine
MFD Lighthouse II

Introduction

This guide describes step-by-step how to install the Graphic file on your Raymarine MFD.

Initial preparation

Copy the RMDS.zip file into a micro SD card and insert into your MFD card reader.

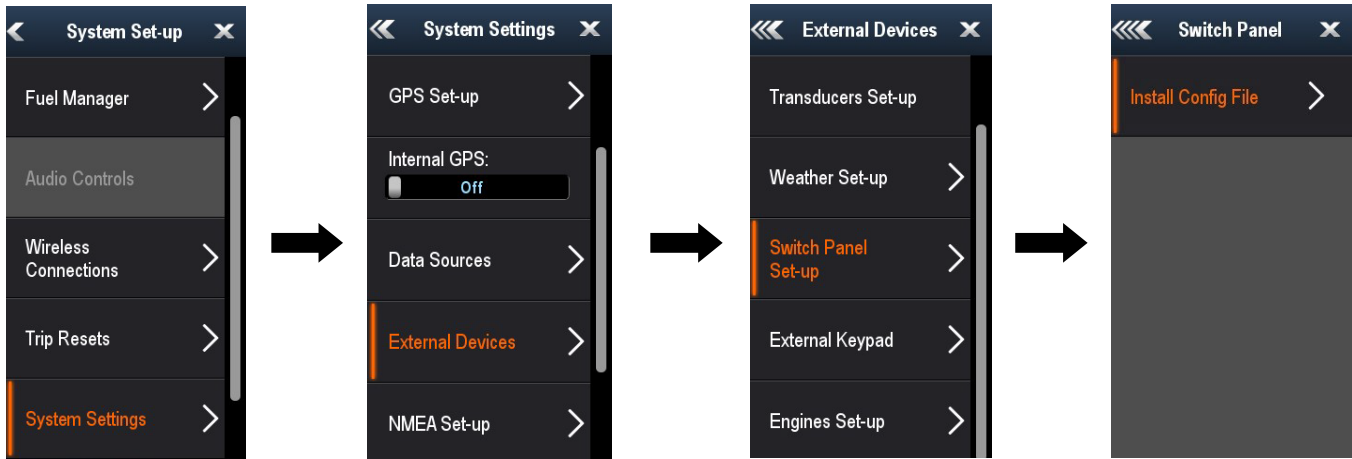
It's important that the RMDS file is kept compressed (i.e. ZIP) and that the file name doesn't contain spaces or unsupported characters.

If you are replacing an existing graphical file, you must remove the existing Switch panel page before installing.

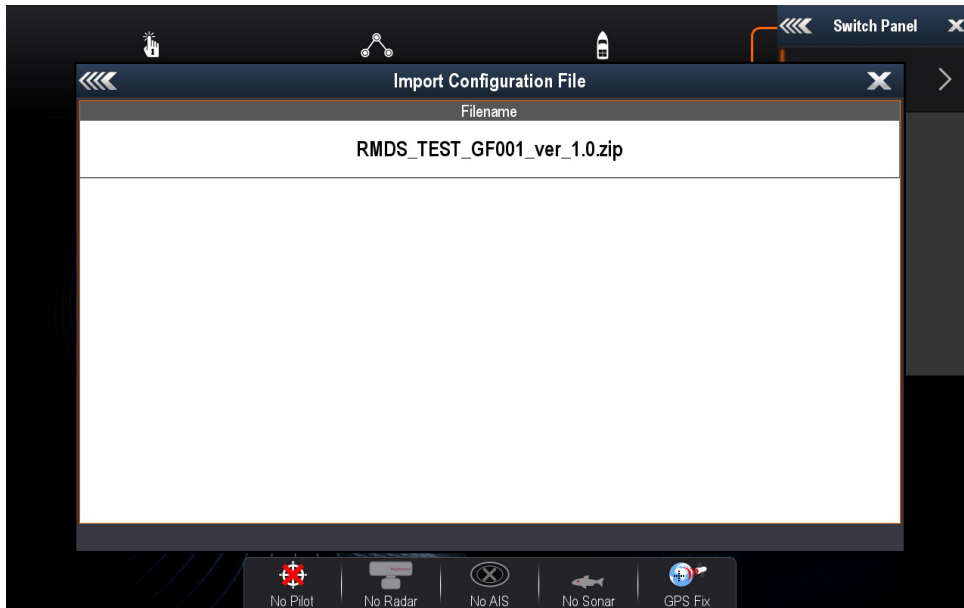
Installation of Graphic file

Go to Set up

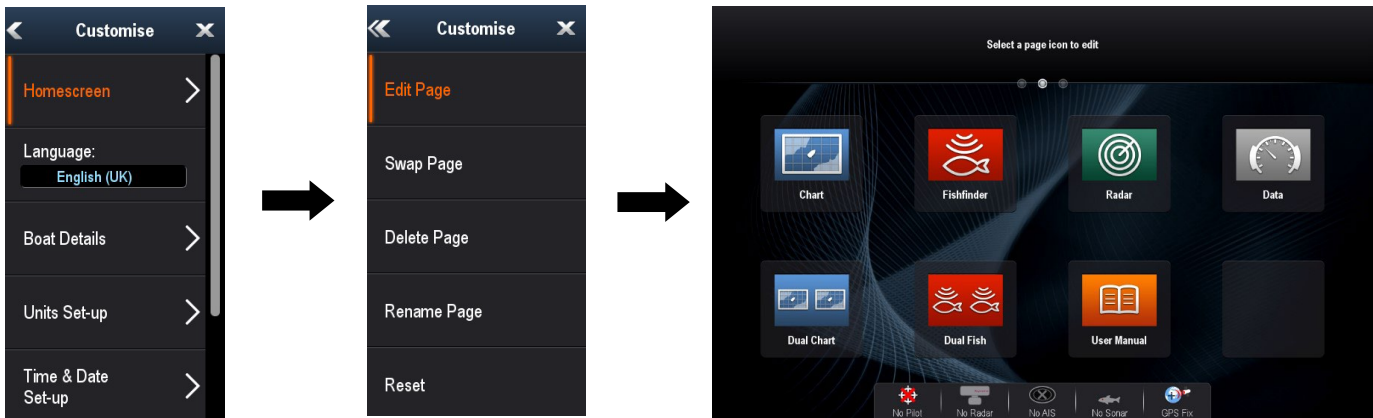




Select your graphic file



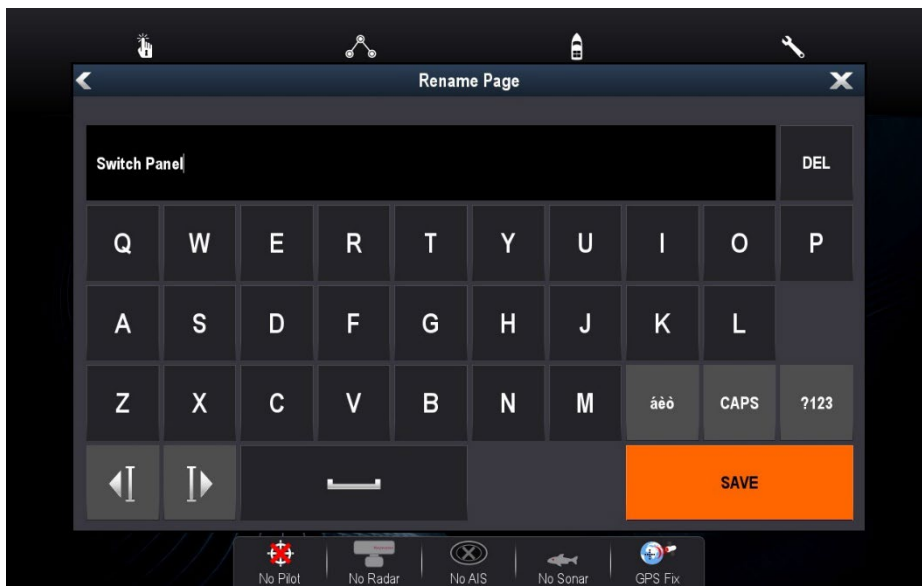
Go to Customise and select empty 'app' (bottom right)



Select Switch Panel



Set name for Switch panel.



Support

A lot of useful information can be found on our website. In case answers can't be found there, feel free to contact us anytime by phone or email.

Website

<https://www.EmpirBus.com/#faq>

<https://www.EmpirBus.com/#support>

Email:

Support@EmpirBus.com

Phone:

+46 522 44 22 22

8 am to 5 pm (CET/CEST), Monday to Friday