



Installation Guide
Graphical file Raymarine
MFD Lighthouse III

Introduction

This guide describes step-by-step how to install the Graphical file on a Raymarine MFD running Lighthouse 3 (Axiom).

Initial preparations

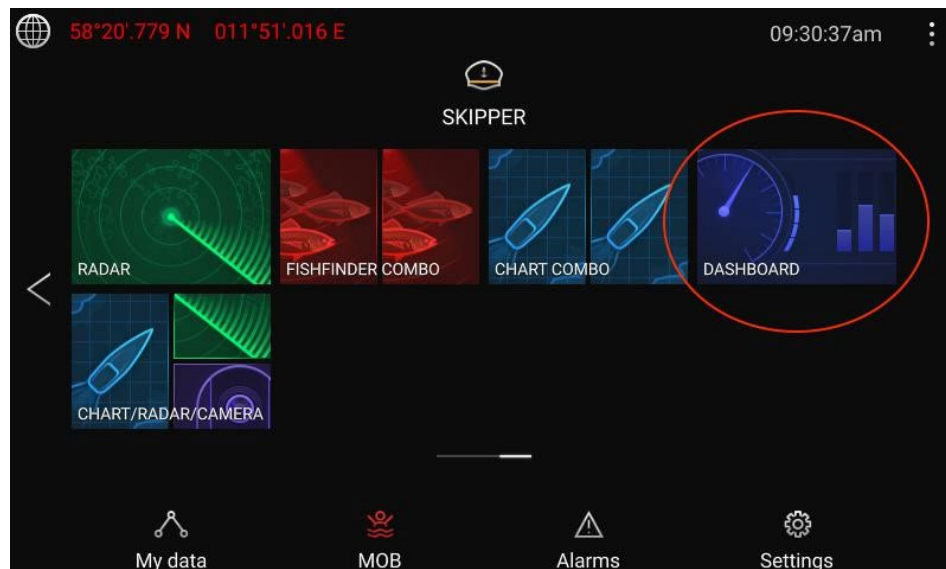
Lighthouse 2 files cannot be installed directly on the Lighthouse 3 operating system without a file conversion.

Please contact your Raymarine dealer or support@empirbus.com for help converting the file.

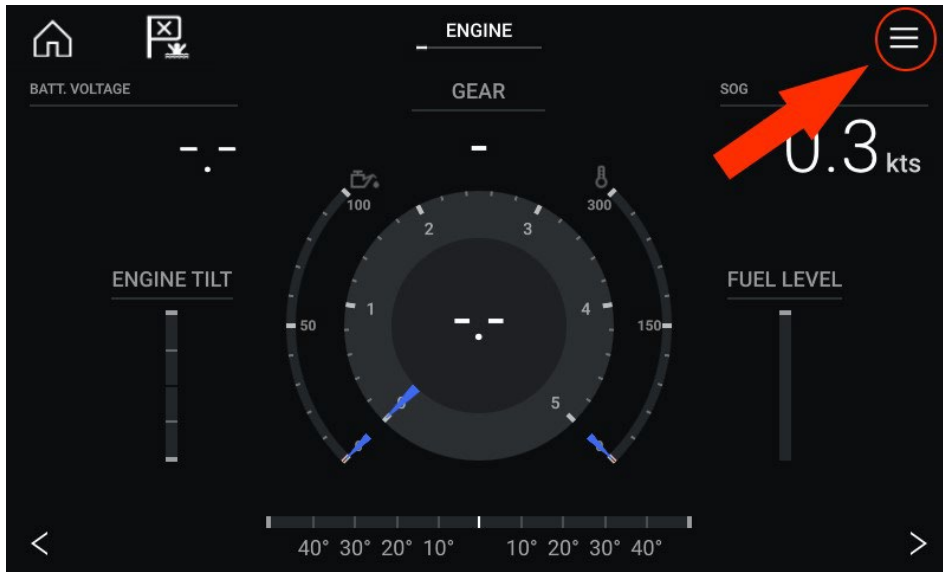
Copy the RMDC.zip file into a microSD card and insert into your MFD card reader.

It's important that you not Unzip it or that the filename has any space between the letters.

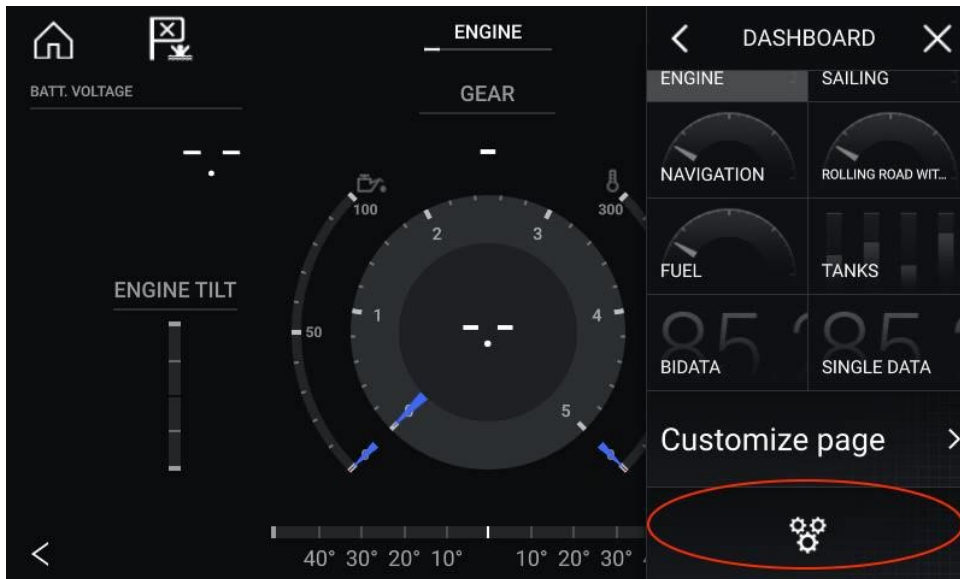
1. Select the dashboard page.



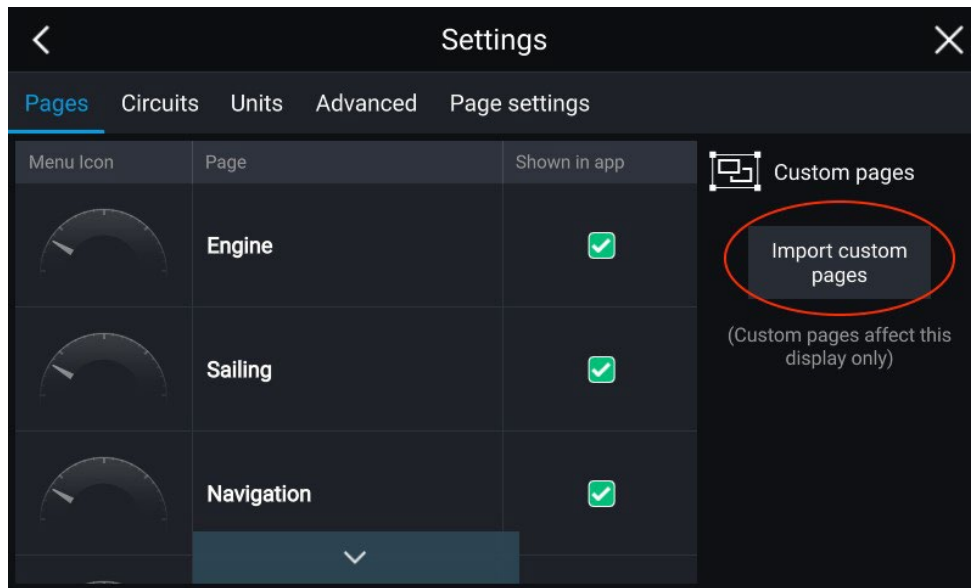
2. Open the dashboard menu.



3. Enter the dashboard settings.

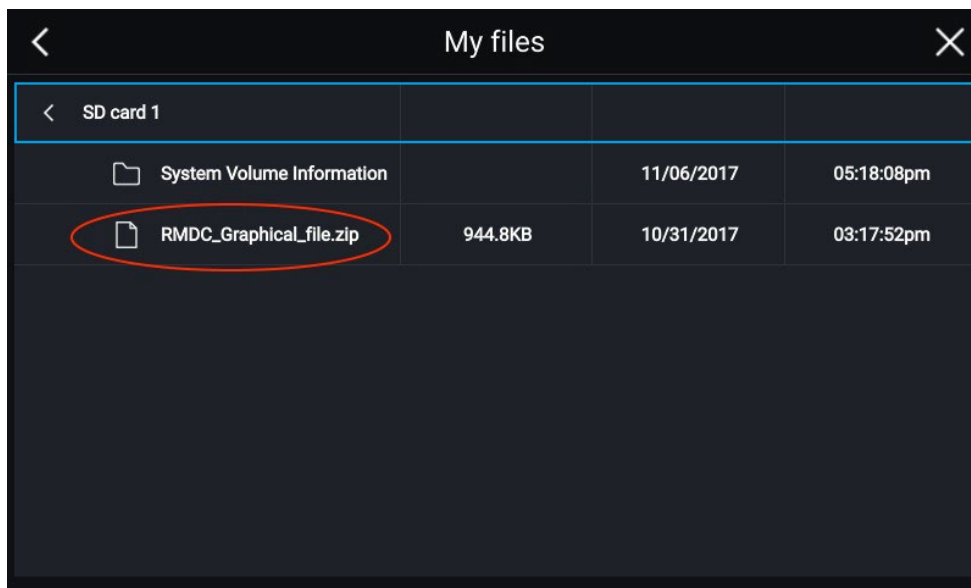


4. Choose "Import custom pages".

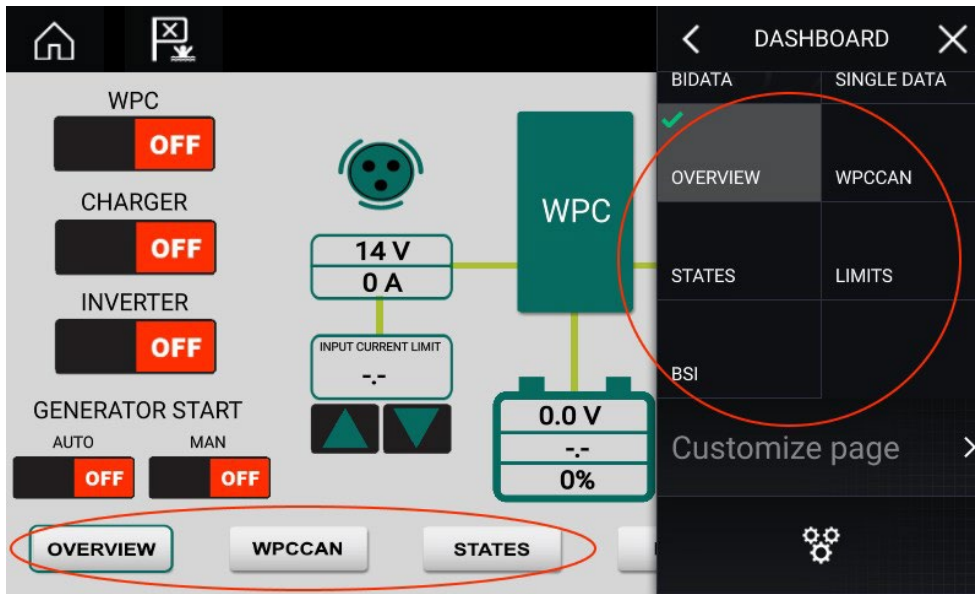


5. Select and install the graphical file (RMDC).

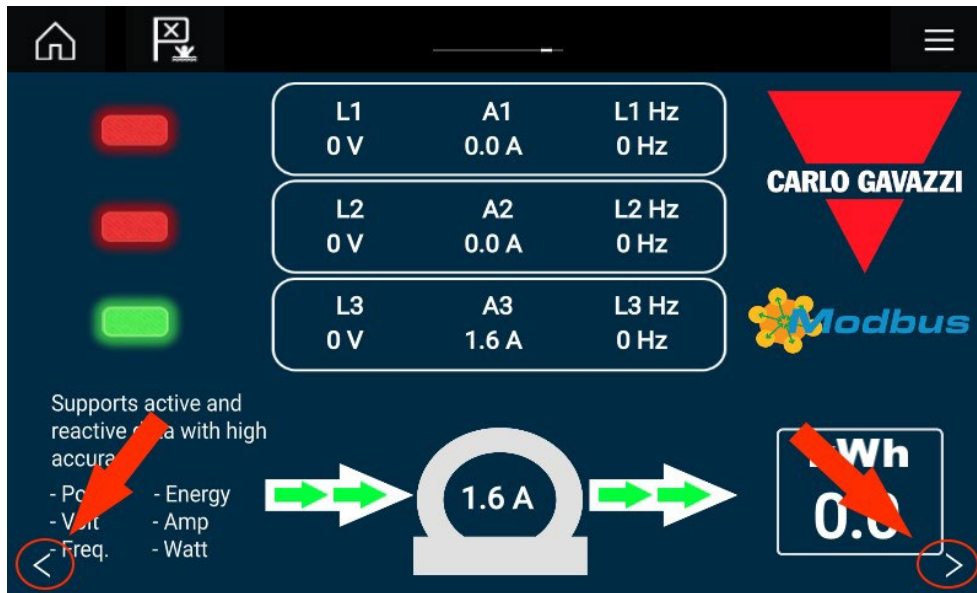
Important: always restart the MFD after installing a graphical file



- If the file contains page navigation buttons then they work as normal but can also be accessed from within the dashboard menu.



- Graphical files without page navigation buttons will use the built-in navigation arrows but can also be accessed from within the dashboard menu.



Support

A lot of useful information can be found on our website. In case answers can't be found there, feel free to contact us anytime by phone or email.

Website

<https://www.EmpirBus.com/#faq>

<https://www.EmpirBus.com/#support>

Email:

Support@EmpirBus.com

Phone:

+46 522 44 22 22

8 am to 5 pm (CET/CEST), Monday to Friday