

Installation guide graphical file (Raymarine Lighthouse 3)

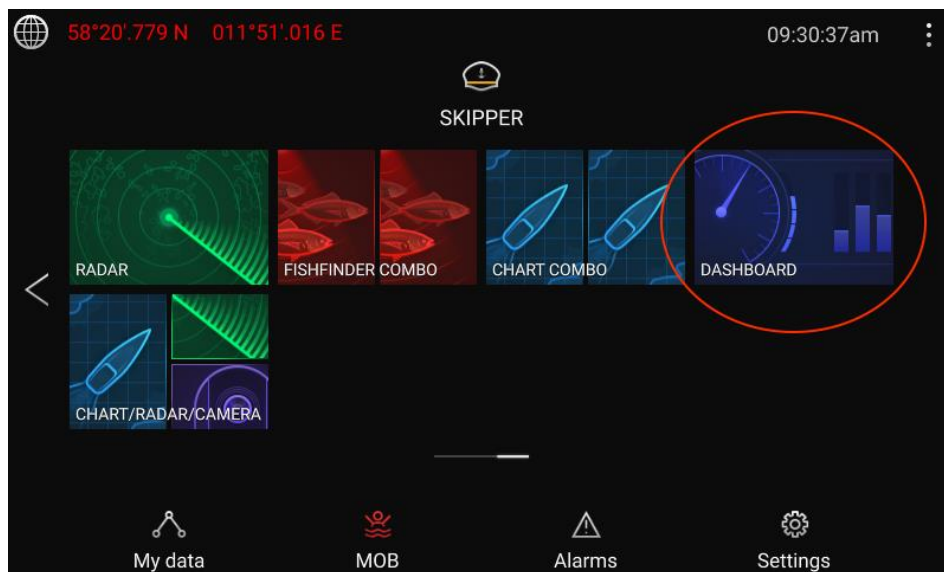
This guide describes step-by-step how to install the Graphical file on a Raymarine MFD running Lighthouse 3 (Axiom).

Initial preparations

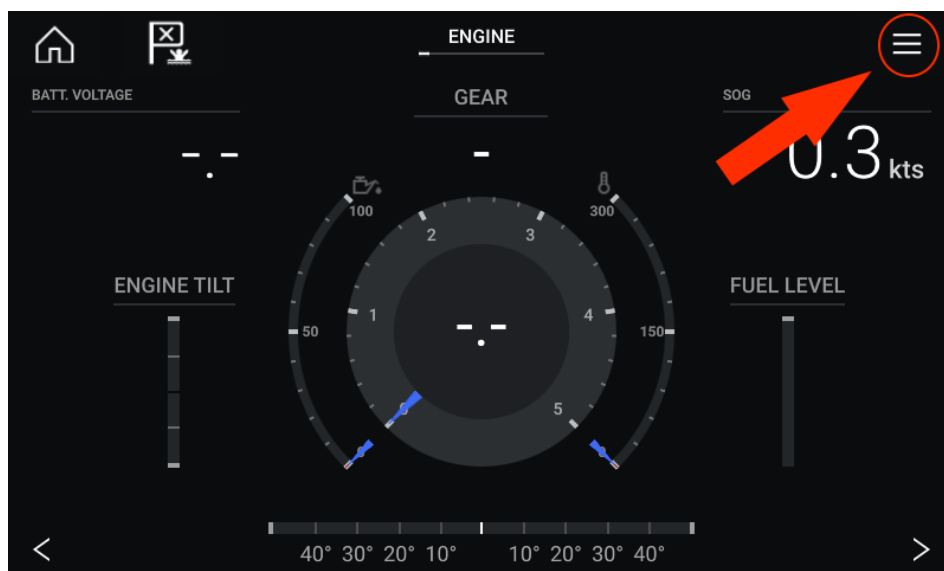
Lighthouse 2 files cannot be installed directly on the Lighthouse 3 operating system without a file conversion. Please contact your Raymarine dealer or support@trigentic.com for help converting the file.

Copy the RMDC.zip file into a microSD card and insert into your MFD card reader.

It's important that you not Unzip it or that the filename has any space between the letters.

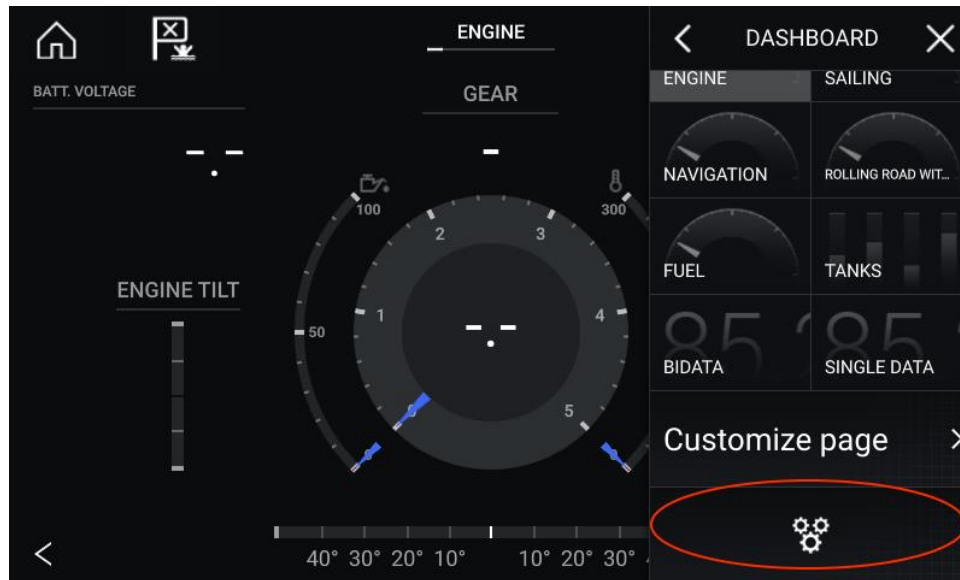


1. Select the dashboard page.

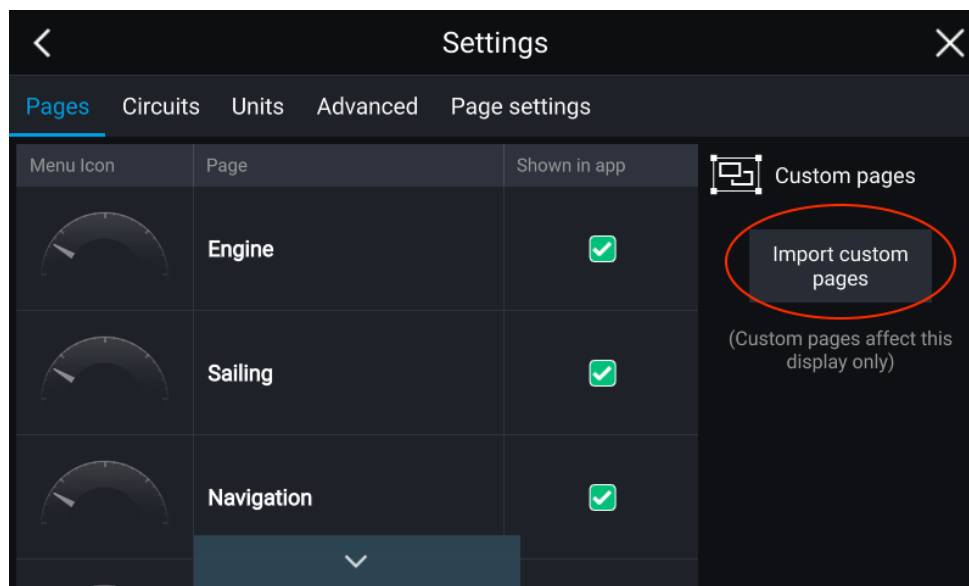


2. Open the dashboard menu.

Installation guide graphical file (Raymarine Lighthouse 3)

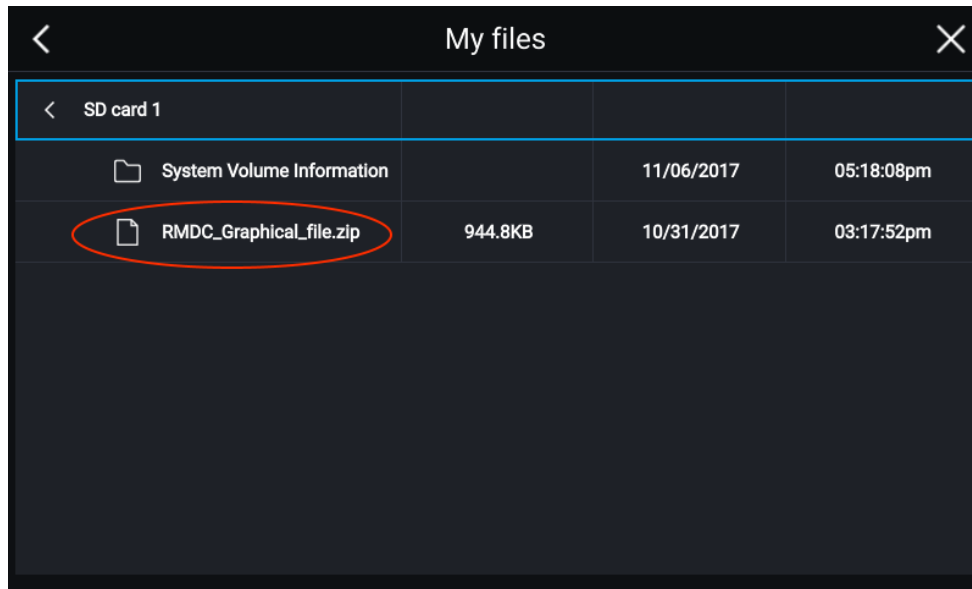


3. Enter the dashboard settings.



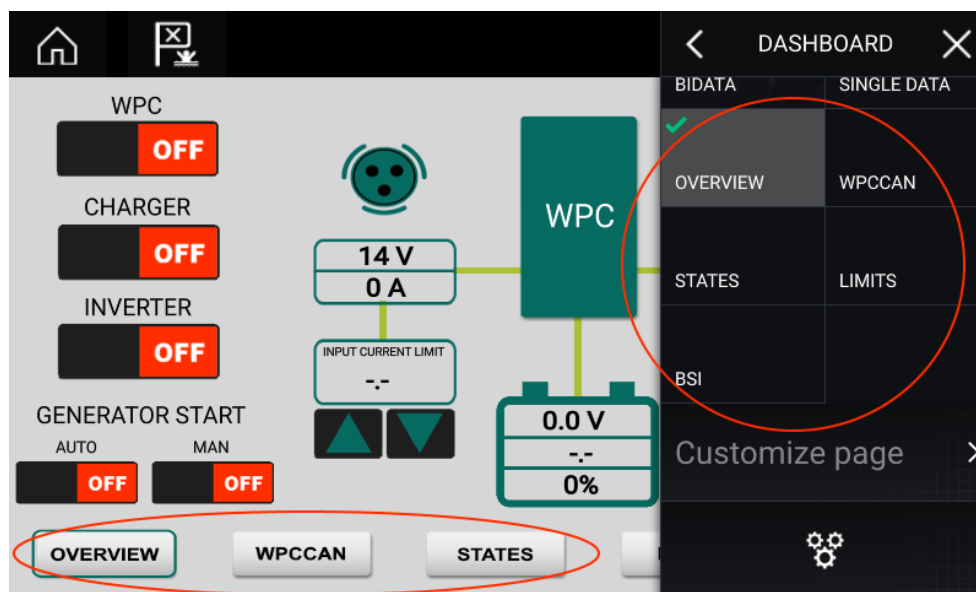
4. Choose "Import custom pages".

Installation guide graphical file (Raymarine Lighthouse 3)



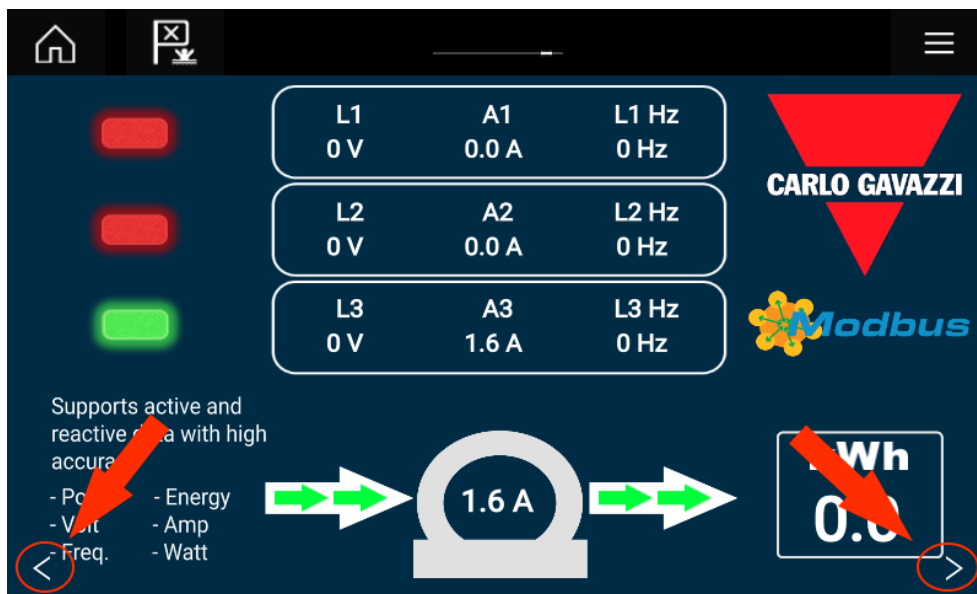
5. Select and install the graphical file (RMDC).

Important: always restart the MFD after installing a graphical file



6. If the file contains page navigation buttons then they work as normal but can also be accessed from within the dashboard menu.

Installation guide graphical file (Raymarine Lighthouse 3)



7. Graphical files without page navigation buttons will use the built-in navigation arrows but can also be accessed from within the dashboard menu.